

COFFEE STOP – ST MICHAEL'S SCHOOL – MALAWI

The photo (below) shows children in Malawi wearing uniforms provided for Banana Box by St Michael's School, Stewkley. At Coffee Stop we heard about this charity that aims to support the children in northern Malawi, one of the poorest countries in the world, to improve their educational experience by sending out to schools items that may be outgrown, outdated, or no longer needed by those discarding them. These include: outgrown school uniforms, sports equipment, trainers, musical instruments and stationery essentials like paper, notebooks and pencils, where these items are not available or affordable. Everything is packed in strong cardboard boxes, that used to be banana boxes.

Projects funded by the charity have also replaced school roofs with corrugated sheets from which water can be collected, as well as providing a safer covering for the school buildings.

The charity is run by volunteers and a very enthusiastic trustee talked us through what school is like for the children in Malawi.

The money we raised at the Coffee Stop, £220, will go towards the transportation costs of getting the packed banana boxes to their destinations and we were delighted to hear that St Michael's School had supplied some uniforms for the children in Malawi to wear.

The next Coffee Stop is on Thursday 7 March from 10.30am to 12 noon, in the Pavilion, in aid of Calibre Audio, which provides an audiobook service for those who have a disability that makes reading print difficult. All are welcome to come and have a cup of coffee or tea with a biscuit or two. There is no charge but a donation is welcome to support the chosen charity.



The Grapevine: Next issue on or about 1 April. Deadline for contributions and ads: 15 March.

Contact: team@stewkleygrapevine.co.uk To advertise: email or call 242137. For editorial: email or call 240350.



VILLAGE DIARY	
March 2024	
Fri 1	Quiz Evening for St Michael's Church and Methodist Chapel
Mon 4	PC meeting at 7.30pm, Village Hall
Mon 4	Book Club, Carpenters Arms, 8pm
Wed 6	Bins: General waste, food bins and garden waste
Thu 7	Coffee Stop, Pavilion, 10.30am
Mon 11	Stewkley Village Hall AGM
Wed 13	Bins: Recycling blue tops and food bins
Fri 15	Stewkley Church- a journey through 900 years
Mon 18	Climate Crisis Exploration Session, Pavilion
Wed 20	Bins: General waste, food bins and garden waste
Wed 20 - Sat 23	Stewkley Players, Village Hall
Sun 25	Stewkley Players Big Breakfast, Village Hall 9.30am - 12.
Wed 27	Bins: Recycling blue tops and food bins
Wed 27	SLHG, Rec Pavilion, 7.45pm
Sun 31	Clocks go forward 1am.

What's on - Looking Ahead 2024	
April	
Sat 27	Stewkley Players, Murder Mystery Evening
May	
Sat 11	Aperitif o'clock, St.Michael's Church
Sat 18	Stewkley Singers, All Saints, Leighton Buzzard
June	
Sat 15	Stewkley Open Gardens, in aid of St Michael's Church
Sun 16	Stewkley Open Gardens, in aid of St Michael's Church
Sat 22	Summer Ball - Little Hearts Matter - Upper Dean Farm
July	
Sat 13	Flower Show, Village Hall

If you are organising an event in the village, please let us know as soon as your date is confirmed. We will publish details here to inform all village event organisers so that clashes can be avoided.
team@stewkleygrapevine.co.uk

WHAT'S ON IN MARCH

Fund Raiser for
St. Michael's Church and the Methodist Church
QUIZ EVENING
Friday 1 March
7pm in Methodist Chapel Schoolroom
Tickets £10, includes food and your team place.
To book ring 240337

BOOK CLUB
Monday 4 March
8pm at the Carpenters Arms
Come along for a drink and a chat with our lively group.
You don't need to have read the current book. Bring your ideas.
Book to discuss: *Caves of Steel* by Isaac Asimov
Book for April: *Saturday Night and Sunday Morning*
by Alan Sillitoe
Please contact Sally 07902 860255 or
Greg on 240487 for information.

COFFEE STOP
In the Pavilion from 10.30am to 12 noon
Thursday 7 March
In aid of Calibre Audio

Stewkley Village Hall
(Charity No. 231141)
ANNUAL GENERAL MEETING
Monday 11 March at 8pm
Visitors welcome.
Please consider supporting the Village Hall.

"STEWKLEY CHURCH - A JOURNEY THROUGH 900 YEARS"
An illustrated talk by John Sheldon
Friday 15 March 2024 7.30pm
in Stewkley Church
Tickets £10 on sale now to include refreshments
07786 543193 eltonart@hotmail.com or 01525 240398.
Help to fund modest facilities to make St Michael's more accessible for everyone in future.

Stewkley Local History Group
ALL WELCOME TO THIS OPEN MEETING
Wednesday 27 March
"The French Royal Family in Exile at Hartwell House"
A talk by Neil Rees.
At the Rec Pavilion, 7.45 for 8pm.
Admission £5, includes refreshment.

To let the village know about your Stewkley event
free of charge on the What's On page, please
email: team@stewkleygrapevine.co.uk

To ensure equal coverage for all events,
please keep information restricted to:
Organisation, event title, date, time and location,
one line of no more than 50 characters description
entry cost, contact for further information.

SAVE THE DATE

Stewkley Methodist Chapel

AFTERNOON TEA**Saturday 20 April**

from 2.30pm.

£12.50 per person - pre-booking required.
Call sue on 240761 to book, pay and collect.

STEWKLEY WALKERS *from Bridget Watson*

We look forward to seeing you on one or more of our walks. Walk leaders who recce walks may change the route depending on the conditions on the day but, as a rough guide, walks take approximately two hours. Occasionally a walk has to be cancelled due to poor weather conditions, so please check your emails or phone the walk leader before setting off.

Walks Programme for March 2024**Wednesday 6 Coombe Hill, Wendover 4 miles**

Meet at 10am in the car park next to Wendover Library (HP22 6DU). Car park charges are 80p for up to 3 hours and £1.10 for up to 4 hours. There are toilets in the car park. This is an uphill and downhill walk with some stunning views over the Vale of Aylesbury and Chiltern hills. The route takes us up the hill towards the train station and HS2 workings, then along footpaths through fields and woodland. There is a long, steep climb through the woods towards Coombe Hill before emerging onto a plateau and arriving at the monument commemorating the men of Buckinghamshire who died in the Boer War. On a clear day there are stunning views from the monument. From there it is downhill through open countryside back to Wendover. There are 10 stiles/gates, all of which are dog friendly. Livestock may be present on Coombe Hill, so dogs on leads where appropriate. NB Parts of the route can be very muddy and slippery and walking poles would be useful. The Red Lion (01296 622266) pub is dog friendly in the bar area. If a number of us wish to have lunch, then it is recommended that we book as a group so please let Arthur know by 29 February at the latest.
Leader: Arthur Jones 07492 624224

Thursday 14 Wilstone Circular 5 miles

Meet at 10am at the Half Moon Pub in Wilstone (HP23 4PD). This route includes some field walking with lots of sheep so dogs on leads please. It is essential to book your own lunch well in advance as the pub is quite small and popular. It also gets busy at lunchtimes. Phone 01442 826410 to book. Dog friendly pub.
Leader: Tom 07970 479007 or 376736

Wednesday 20 Caldecotte and Ashlands Lake 5 miles

Meet at 10am at the Caldecotte Pub and Grill (MK7 8HP). This is a five waterways walk, mostly hardstanding, to include Caldecotte North Lake, the river, Walton Lake, the canal, Ashlands lakes and back via the canal. NB The route could change if there is any flooding. Dogs on leads welcome. Toilet facilities. Cafe.
Leaders: John and Alice 07905 759120

**FARCE 'N'
YOUR SEATBELTS!**

MARC CAMOLETTI'S

**A STEWKLEY PLAYERS PRODUCTION****WEDS 20 - SAT 23 MARCH 24****8PM STEWKLEY VILLAGE HALL**

Licensed Bar opens 30 mins prior to the show

TICKETS £7.50 - ON SALE 26 FEB**BOX OFFICE TEL: 07845 489167****UPDATE ON THE VILLAGE HALL
ROOF PROJECT** *from Jill Scott*

By last autumn the Village Hall Committee had received the necessary planning consents for the replacement of the original roof, the addition of extra insulation and the installation of solar panels. Our fundraising within the village got off to a wonderful start with support not only from individuals but also the Stewkley Players, who gave the entire proceeds of their autumn breakfast to swell the funds.

The plan is to instruct the contractors to proceed with the work in late spring. Activities at the hall should not be unduly affected although some parking spaces may be blocked off temporarily.

In the meanwhile we continue to raise funds. The Stewkley Players are holding a Murder Mystery Evening on 27 April so please look out for details and support their fundraising on our behalf. The Village Flower and Produce Show will be back this year on 13 July; do start planning to grow flowers and vegetables, or make jams and cakes, or create art and craft items to enter. There will be details of both events in the *Grapevine*.

A reminder that the hall is available for use by all, including the different groups meeting there regularly and families booking it for special events. We look forward to these improvements being completed this summer, well in time for the hall's centenary in 2025.

CAN U B SCARECROW READY?

St Michael's and All Angels Church Stewkley will once again be running a Scarecrow Trail in conjunction with its Open Gardens Weekend on 15 and 16 June.

Entries are invited from individuals, families, groups, neighbours or friends; all entries to be prominently displayed over the two days of the Open Gardens.

Entries must be registered, so that a map can be drawn up, showing the position of each entry.

Entry is free, and the Scarecrows will be judged by all who visit the Gardens, with a small prize awarded to the winner.

More information will be posted in the *Grapevine* for April and May, so watch this space.

Interested? Call Denise Draper 240524.

DOWN MEMORY LANE

"Stewkley Church - a Journey Through 900 Years"

Stewkley Church quite rightly returns to the Down Memory Lane spotlight on 15 March with an illustrated talk event inside St Michael's itself. It's a fine prospect to have the star subject of the talk surround us in all its glory to respond to the telling of its historic journey by giving a good account of itself.

From the Church's very commissioning, there is no doubting the skill of its Norman builders in choosing its site 150 metres above sea level on the highest spot in the parish on the exact watershed of the Ousel and Thame River basins. The Romans had already made use of Stewkley's altitude when building a road from Dorchester-on-Thames to Alconbury traversing other nearby strategically high vantage points: Pitchcott, Whitchurch and Creslow through Stewkley and onto the Brickhills.

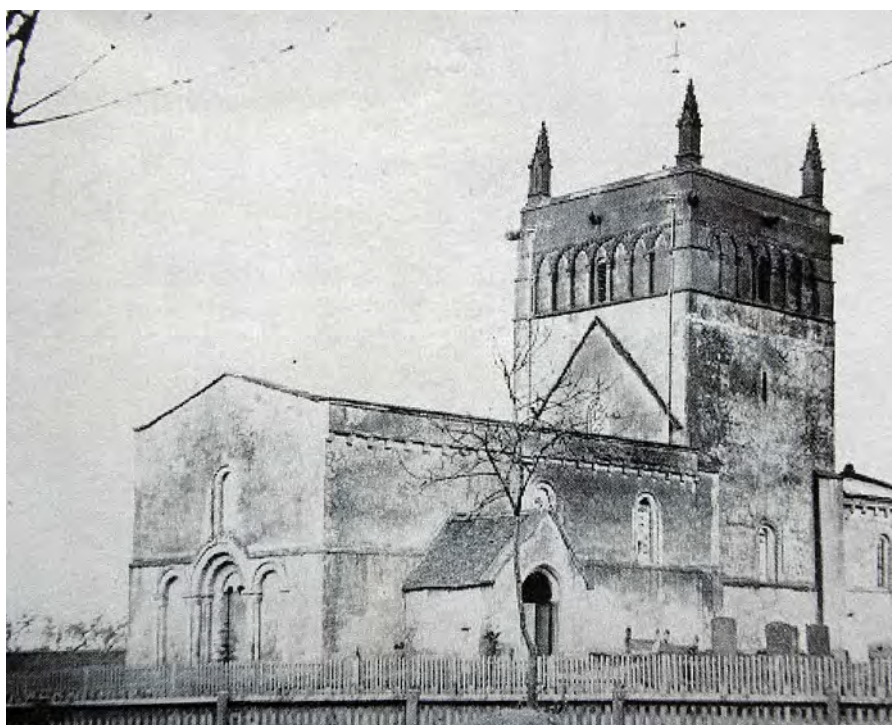
Stewkley Church windows are relatively small, round-headed, deeply splayed and set high into the thick Nave walls. Only 100 years after the Norman Conquest when castle building had been a priority for the invader, they were probably influenced by Norman castle builders as churches were still places of refuge in times of danger and England remained a pretty rough place in the reign of King Henry II. There was no glass available in those days with only wooden shutters to close against the elements...or maybe worse things.

The Church later suffered the indignity of having almost flat, lead-covered roofs over the Nave and Sanctuary for nearly 200 years. The roofs were reduced to a low pitch in 1684, just before the death of King Charles II. It was expedient probably because they were leaking from rainwater. Although there is no record or evidence of damage to the Church during the English Civil War and the Cromwell Commonwealth 30 years previously, the roofs are likely to have suffered neglect and been in poor shape. It was a tough time to be concerned about maintaining your roof when your village was on the front line in a war twist the Parliamentarians in Aylesbury and Newport Pagnell, and the Royalists in the Claydons and with King Charles in Oxford.

The Church nearly suffered further indignity in Victorian times when the incumbents of the day came up against the esteemed Victorian High-Gothic architect, George Edmund Street, who had been retained to carry out the restoration and conservation of the Romanesque building in 1860. Concerned with maintaining the architectural proportions of the simple Norman parish church, Street resisted the ideas to lengthen the Nave, build an extra north aisle with vestry and to throw out transepts...with good reason as he believed transepts would endanger the integrity of the Tower walls. But why an extra aisle on the dark, damp, north side of Stewkley Church? Quite simple apparently, extra aisles were usually built on the north side of parish churches because there were fewer graves to get in the way than on the sunnier, south side of churches where villagers preferred to bury their deceased.

Largely unnoticed, mounted on the north wall of the Sanctuary is a group of 14th-century alabaster figures, found during the 1862 restoration. Thought to be part of an original reredos, they represent the Virgin Mary and Christ Child with attendant angels, and the pilgrim saint, St James the Greater. Art historian, Professor Richard Marks in his 2004 book *Image and Devotion in Late Medieval England*, conjectures that this was almost certainly Stewkley's patronal image, and that St Michael's was formerly St Mary's, as represented on some antique maps of the village.

Why not come along and discover more on Friday 15 March?



St Michael's from south-west, 1862, pre G E Street restoration.



St Michael's Church West Doorway floodlit

FROM THE GRAPEVINE 10 YEARS AGO...

From March 2014, nothing new in global warming about 2024's early foul weather as in January-February 2014, rainstorms and high winds caused village-wide damage with rainfall exceeding records kept locally since 1997... Stewkley Rights of Way Association changed its name to Stewkley Walkers...moving obituary tributes were paid to village stalwarts Doreen Bliss (93) and Bill Chappell (87)...Stewkley Cygnets pre-school group was awarded an 'outstanding' grading by Ofsted...Stewkley Short Mat Bowls Club's annual 'Uppers and Downers' match saw victory for the 'Uppers' team from the North End of Stewkley...Stewkley Singers began rehearsals for their May concert of Haydn's *Creation*... Stewkley Players were lining up for their latest production of *The Fox on the Fairway*...and village patients, cared for by Drs Gibby and Dunford at Ashcroft Surgery in Wing, were very sad to see them both retire after a combined 60 years of service.



FROM THE GRAPEVINE 20 YEARS AGO...

From March 2004, burglars fled from the Rec Pavilion, disturbed by the alarm, after causing extensive entry damage but leaving behind an incriminating trainer shoe as evidence... although the 200 required village registrations were exceeded to supposedly trigger BT Openreach into reviewing Stewkley for high-speed fibre broadband, 20 years later it appears we are still waiting for full fibre broadband to premises from Openreach... in 2004 Stewkley enjoyed a plethora of local bus services: respectively three, four and five times daily to Aylesbury, Bletchley/Milton Keynes and Leighton Buzzard...Peter Noad, an active Stewkley figure and avid collector of historic village postcards, passed away...and St Michael's Church bells returned to their Tower after their conservation work at the Nottingham workshop of Hayward Mills Associates.



EDNA EDMUNDS (NÉE STANTON)
1933 - 2024

Edna started life in Hatfield and, when the family moved to Wolverton, she was educated at New Bradwell School. She represented Bucks County in the 100 yards sprint and the long jump, which was quite a feat as she was only just over five feet in height.

She first had a secretarial job at the Wolverton Railway Works until working alongside her father in the butcher's shop in Wolverton, where she took on an organisational role and learnt the skills involved in being a butcher. Her father set up his own business in Mursley as GH Stanton.

Edna met her husband, Ray, delivering eggs for Faulkners Eggs of Stewkley. They married at St Mary's Church, Mursley in 1956 and lived at 83 High Street South, Stewkley. Ray retrained as a butcher, working alongside his father-in-law George in the Mursley shop. Eventually Edna and Ray took

over the management of the family business in Winslow until they retired.

Edna was a keen member of the Stewkley WI. She and Ray devoted many hours to helping out at the Stewkley Rec and Edna with the famous cricket teas in the summer. She also helped with the Daisy Club.

Sadly Edna suffered from Vascular Dementia in later years and lived first at Carey Lodge and then at the Avondale Care Home in Aylesbury, where she passed away in January. Edna leaves son Keith and wife Alison, grandson Tom and wife Stacey and great grandson Tommy.



STEWKLEY WALKERS from Neil Shefferd

Stewkley Walkers enjoyed a record turnout for its second walk of 2024, which took place around Willen Lake in Milton Keynes on 25 January.

In total, 31 walkers and seven dogs took part in a four-mile walk on a sunny day that passed both the north and south lakes as well as the Peace Pagoda.

The contrast in weather for the group's next walk, two weeks later, was reflected by the significant reduction in numbers.

Five hardy, or probably foolhardy, individuals braved heavy rain and strong winds to take part in a walk around Furzton Lake, also in Milton Keynes, which was reduced in distance due to the elements.



SCHOOL REPORT *from Mr David Morley*

Staff at St Michael's work incredibly hard to support our children. They are acutely aware of the children's needs and interests and help them to make progress, whilst establishing lifelong learning habits with the aid of an ambitious and innovative curriculum.

We are always looking to improve. The entire team at St Michael's is relentless in identifying areas for us to work on and set about discovering the best examples of good practice both locally and nationally for us to implement. This approach has brought us considerable success. Each year we work with staff and governors to produce our School Improvement Plan. It is hugely reassuring for us that during our inspection in December, Ofsted was able to recognise our successful approach to school improvement and validate our judgement of the school. You can find our report here: <https://files.ofsted.gov.uk/v1/file/50238562>



Our report contains multiple positive comments about the school and our staff and the progress we have made in recent years. Since the last inspection in 2018, the Ofsted inspection framework has changed and has become more challenging and, with this in mind, it is pleasing that we have retained our "Good" status.

I am incredibly honoured to lead such an amazing school community. Our staff team can feel enormously proud of the report. They have worked incredibly hard and have achieved so much.

Ofsted inspections have been very much in the news in the last couple of years due to the concerns raised about the impact of inspections on staff mental health and wellbeing. It was lovely that during the process of the inspection, every single parent I spoke to asked, with concern, how the staff were and if everyone was ok.





Stewkley Players

Present

A MURDER MYSTERY EVENING

(WITH SUPPER)



Strictly Limited Numbers

Licensed Bar

Raffle

Silent Auction

Proceeds to the
Village Hall Roof Appeal

Tickets £20
On Sale at the
Village Hall
March 24th 2024 (AM)

Afterwards by calling
07522 862929

STEWKLEY VILLAGE HALL

SATURDAY APRIL 27th, 2024, 8PM

STEWKLEY TENNIS CLUB *from Neil Shefferd*

Stewkley Tennis Club is making plans for an exciting year ahead, on and off the court. Current yearly membership of the club runs from March 2024 to the end of February 2025, so now is a great time to join.

Prices are £85 for adults, £190 for a family and £20 for juniors, including joining fees. Full details are available via the tennis club's website at www.clubspark.lta.org.uk/stewkleytennisclub

The men's team won its previous winter and summer leagues, resulting in promotion.

As a relatively small club, Stewkley is holding its own and fighting to stay up in its current winter division, where at the time of writing it sits in sixth place.

Meanwhile, the ladies' team is enjoying its tennis this season with some wins in early season matches.

The second half has seen a few draws and losses. The winter weather has meant some cold and windy matches but it has only caused a couple of postponements.

Looking forward, the club is making plans for some exciting social and fundraising events during 2024, so watch this space for more details.

The club is also pleased to announce the return of the Kris Pratt Memorial Trophy later this year, a friendly competition in memory of long-serving tennis club member Kris Pratt. A date has yet to be finalised for this, with more details to follow.

SPRING FORWARD, FALL BACK

British Summer Time (BST) is the practice by which the UK pushes time forward one hour ahead of Greenwich Mean Time (GMT) in the spring, meaning everyone gets up an hour earlier and supposedly sees more sunlight, and drops it back by one hour again in the autumn. This is also the case in the United States and other countries across Europe.

Why?

The idea was originally put forward by American Benjamin Franklin who suggested that Parisians would benefit from leaving their beds an hour earlier. This was followed by a New Zealander, George Hudson, proposing to his Government that clocks should go forward by two hours in the summer.

But the idea really took off when a builder, William Willett (Chris Martin of Coldplay fame's great-great-grandfather), campaigned in Britain to extend light hours in the evening for the benefit of his golf game.

But the change actually came during World War One with the Summer Time Act 1916, in response to a German decision to extend light evenings and save fuel for the war effort. Many European countries followed suit, including the UK.

In the UK the arrangement is now defined by the Summer Time Order 2002. This states that BST begins at 1am GMT on the last Sunday in March and ends at 1am on the last Sunday of October.

There has been much debate over the years about the practice, with Government enquiries and polls. Many would like to see BST end as it interferes with sleep patterns but outdoor workers, such as farmers, enjoy the longer evenings. The Royal Society for Prevention of Accidents and environmental campaigners favour what is known as the Single/Double Summer Time which would see BST extended through the winter and clocks 'sprung' forward by two hours in March.

In 2019 the European Parliament did vote to end the practice at an EU level with individual countries being left to decide, but the reform has been temporarily 'put on hold'.

There are currently no plans to change the practice in the UK and this year 'spring forward' will happen on Sunday 31 March (Easter Sunday) and 'fall back' on Sunday 27 October.

SCAM AND FRAUD CALLS

from Thames Valley Police

Scammers usually attempt to call elderly and vulnerable people in the community, and they don't care who gets hurt along the way!

- The call will often involve a scammer pretending to be a police officer, even quoting a shoulder number of a current serving officer.
- Scammers will call claiming to be a police officer and explain there is a problem with your bank account. They may state the staff at your bank are corrupt and cannot be trusted, or that your bank details have been cloned and they now require your assistance with their investigation.
- They will tell you to transfer money into a secure account allegedly in your name, in addition they may also ask you to provide cash, vouchers or valuable items to a courier. In reality, this bank account will belong to the scammers and a victim will end up transferring money straight into their pockets!
- If you receive a call like this HANG UP, a police officer or even a bank fraud team will never ask you to transfer money to a 'safe account' You may also receive calls pretending to be from your bank, HMRC or other government organisations.

For any suspicious phone call that involves your money, bank or personal details, you can "take five" and verify via a range of trusted methods, please visit here for more information: <https://www.takefive-stopfraud.org.uk/>

☎ Always report suspected scams to Action Fraud, either online at www.actionfraud.police.uk or by telephone on 0300 123 2040, alternatively you can report via 101.

PARISH COUNCIL MATTERS

Notes from the Parish Council Meeting held on
Monday 5 February 2024 at the Village Hall.

Update from Buckinghamshire Unitary Councillor, Phil Gomm

- The next Community Board Meeting will be held via Teams this Wednesday 7 February.
- Cllr Gomm said he would arrange a meeting with Stewkley Cllrs to discuss a potential Community Bus project.
- The Cricket Club has applied to the CB for matched funding for practice nets and covers.
- The Cabinet Member for Health and Wellbeing, Angela McPherson, warns of an increase in cases of measles across Buckinghamshire.

PLANNING

24/00135/APP – STEWKLEY

Upper Dean Farm, Dean Road, Stewkley, LU7 0EU

Demolition of an existing barn, removal of caravan and replacement with two new-build dwellings with associated parking and new internal driveway. Cllrs resolved to OPPOSE this application.

24/00213/APP – STEWKLEY

Breach Farm, 113a High Street South, Stewkley, LU7 0HU

Householder application to demolish part of the existing bungalow, existing garage and an existing barn. Erection of single storey side and rear extension, loft conversion to habitable room, fenestration alterations and installation of solar panels. Erection of detached garage and new workshop. Cllrs resolved to SUPPORT this application.

Anti-social Behaviour Working Group

Cllr Locke gave an update following the Working Group's initial meeting. They discussed the likely scope of the group, being (i) graffiti and criminal damage, (ii) dog fouling and attacks, (iii) proactively monitoring space where there might potentially be antisocial behaviour, and (iv) youth initiatives. In terms of general activities, the group will focus on signposting where to report, evidence gathering, and providing a way for people

to report anonymously if they are not comfortable reporting something themselves. Next steps are likely to be an article in the *Grapevine* on creating awareness.

Other Matters

- A successful first meeting was held with TGMS Cemetery Development, and they have now gone away to come up with some conceptual designs for the lawn cemetery extension.
- The Rights of Way rusty footpath post at the Ivy Lane end of footpath 20, reported last month, has now been inspected and confirmed as added to the list of works programmed.
- Following the departure of our PCSO, TVP is recruiting for a replacement but say we could be waiting some time. On the plus side, they have recruited a new Police Constable, Matt Holman.
- The Winslow and Villages Community Board has confirmed allocated funding of up to £5K for our Commemorative Garden project so work can get underway.
- Two faulty streetlights reported since the Jan meeting; those being LC107 on the Soulbury Road, and PB032 in Chappel Square Island, both of which have now been repaired.
- Cllrs approved unanimously a £60 community funding application to facilitate a What does the Climate Crisis mean to you? session in the Pavilion on 18 March.
- Cllrs approved the purchase of a cabinet to house the Best Kept Village cup in the Village Hall.
- Following installation of the new path, which the gang mowers cannot cross, Rec volunteers will take responsibility for mowing areas around the MUGA, tennis courts and burial ground extension.
- The potholes in the burial ground car park are planned to be filled on Wednesday of this week.
- The Clerk was asked to investigate the large leylandii which is obstructing the streetlight in Maltings Close.

Date of next meeting

The next meeting will be held on Monday 4 March 2024 at the Village Hall at 7.30pm.

NEWS FROM STEWKLEY PLAYERS MARCH 2024

Rehearsals are flying along for our 129th production "Boeing Boeing" - on at the Village Hall from Wednesday 20 March to Saturday 23 March 2024. Tickets priced at £7.50 are now on sale through our Box Office, tel: 07845 489167, or from the Village Hall on Sunday 3, 10 and 17 March (10am-12noon).

A fantastically funny and quick-moving show produced by Tony Crack - come along and join us for a great night out!

Also, in aid of the Village Hall Roof Appeal, we will be holding a Murder Mystery Evening, Adieu Adieu, on Saturday 27 April, produced by Bunt Scott. Tickets are £20 each, to include supper, and are limited, so please make sure you get your tickets early. Call Jilly on 07522 862929 or come along to the Village Hall on Sunday 24 March (10am-12noon).

Thank you to everyone who joined us for our now traditional pre-production Breakfast on Sunday 25 February (photos and report will be in the April issue of *Grapevine*).

Hope to see you soon.

Erica McDonald, Chair, Stewkley Players

ANDREW BEER

Very sadly we report that Andrew Beer of Kings Street, Stewkley, died peacefully at home on 15 February aged 84 years, with his two children Rachel and Peter at his side. He leaves his much loved wife Elizabeth. An obituary will appear in the April issue of *Grapevine*.

STEWKLEY WI from Sheila Fellowes

On 14 February retired Squadron Leader Graham Laurie, retired pilot of the Queen's Flight, came and gave us a talk about the history of the Queen's Flight. He had flown members of the Royal Family on many overseas tours. He was the pilot of the plane that flew Princess Diana's body back to England from Paris. Our next meeting on 13 March is the Annual General Meeting, followed by a talk by Rachael Webb on water and sewage conditions around Stewkley.

The meeting is at the Village Hall and starts at 7.30pm.

For more information contact Sheila Fellowes (240596).

To contact Grapevine

email: team@stewkleygrapevine.co.uk Latest issue available online at www.stewkleygrapevine.co.uk



Methodist Chapel

Minister: Rev Noreen Daley-Lee

Tel: 240083

Email: noreendaley1@hotmail.com

Stewards: stewards@at-the-chapel.co.uk

Tel: 240337

SERVICES and NOTICES for MARCH

3	10.30am	Louis Atkinson
10	10.30am	Rev Richard Atkinson
17	10am	Café Church
24	10.30am	Communion - Rev Noreen Daley-Lee
	5pm	Young people's group
31	10.30am	Easter Day - Lafton Lee

EVENTS FOR ALL IN THE CHAPEL SCHOOL ROOM

- **Quiz evening** for Methodist Church and St Michael's, Friday 1 March at 7pm. Tickets £10 ring 240337.
- **Social fellowship** – Monday 18 March, 2.30pm. Speaker Alice Horne. All Welcome.
- **Good Friday Concert** by the young people, 7pm.
- **Daisy Club** for parents, carers and babies under school age. Wednesdays 10am – 11.30am. Term ends 27 March. New term begins Wednesday 25 April.
- **Mend It** next on Saturday 6 April, 10am to 12 noon.
- Afternoon Tea Saturday 20 April, from 2.30pm. Pre-booking required. Call Sue 240761 to book, pay and collect.

MESSAGE FROM THE MINISTER



Have a little faith!

Messy Church (MC) as a new initiative is experimental for one never knows who would attend. When we had MC in February and only one family turned up, we considered whether to have it at the Parish Church instead of the Methodist Church. During our deliberations John said, "Have a little Faith!" Not too long after families began to

flood the Church. The famous maxim "Have a little faith" became the song of the evening. While the object of faith by its very nature cannot be seen, the writer of Hebrews will go on to remind us that its presence has a vital impact on our life and character. Real faith produces startling results. Therefore, I salute the MC team for their resilience and faith to go ahead with all the planning and preparation not knowing who would turn up. It is through their rather exemplary faith that we have had some encouraging results.

Faith is key to the Christian faith. John the prolific writer shared that several followers went to Jesus' grave and discovered the empty tomb on the first day of the new week. Jesus appears inside a locked room to speak to all His disciples but Thomas. Later Jesus returns when Thomas is present and the disciple who earlier earned the nickname "Doubting" immediately fell to his knees in adoration and worship.

Like Thomas, we only come to believe when there is sufficient evidence. His phrase, "I will not believe it" rightly shifts the issue of belief and unbelief from the intellect to the will. Yet when confronted by Jesus, he recognized Him, fell on his knees, and believed.

It's not wrong for non-Christians to demand evidence for faith. But don't expect proofs alone – whether from prophecy, miracles, testimony, or arguments showing that the Bible to be the supernatural Word of God – to convince others. Believing is a matter of the will. All we can do is present Jesus to others as clearly as possible. When we recognise Him, we will either choose to believe, or not. And it is a peculiar thing that everyone holds his or her view by "faith," for no one can give proof. Stripped down to its basics, faith is confidence that God exists, and the conviction that He rewards those who earnestly seek Him.

On that busy Sunday afternoon MC was a success because we chose to have a little faith even though the evidence was not forthcoming.

Rev Noreen Daley-Lee



St Michael's Church

Benefice Rector: Rev Howard Robson

Tel: 01296 688593

Team Vicar: Rev Dr Andrew Krauss

Tel 07508 213154

Church Warden: Donald Peebles

Tel: 07966 035623

Email: d.peebles@ucl.ac.uk

SERVICES and NOTICES for MARCH

3	10am	Holy Communion
10	10am	Messy Church
17	10am	Holy Communion
24	10am	Holy Communion
28	7.30pm	Benefice Communion - Maundy Thursday Holy Communion at Soulbury
29	2pm	Good Friday Reflective Service
31	10am	Easter Day Holy Communion

† **Junior Church Sunday 24 March** 9.50 in the Hut for school age children.

† **Annual Parochial Church Meeting** 11 March at 7pm.

† **Benefice Lent Group** Thursdays 22 Feb to 21 March – 7.30pm in Wing Church, following the Lenten journey of Christ from the wilderness to Jerusalem.

† **"Stewkley Church – a Journey through 900 years"** – talk by John Sheldon on Friday 15 March in St Michael's.

† **Aperitif O'Clock** – Saturday 11 May in St Michael's.

† **Open Gardens** - Saturday 15 and Sunday 16 June.

† **Food bank:** the porch is open for donations for the Leighton/Linslade Homeless Service. Many thanks for contributions.

† To sponsor the illumination of St Michael's to celebrate a special event or in remembrance of a loved one please contact Tracy Scott on 07775 684803.

MESSAGE FROM THE BENEFICE RECTOR

REV HOWARD ROBSON



Lent began in February and, by now, Lent is well under way. The end of March sees us celebrating Easter Day.

The Sunday Gospel readings show that the Christmas baby has grown and the adult Christ has embarked on his ministry to any and to all who would listen. He has disturbed the powerful and given hope to the poor. He's also challenged those who believed they could clearly see and

hear in faith that perhaps they couldn't; that they couldn't see, hear understand, anything like as well as

they thought. That's why there are various incidents where it was the physically blind and deaf who first recognise Christ and got the point of his ministry.

The Bible readings for Lent also make very clear the growing opposition to what Christ said and did. And it is Jesus' response to that opposition which helps us with the Easter story. Why was the tomb empty? Why wasn't he there? Because throughout his ministry and especially facing growing opposition, Jesus never remained where people thought he should be or where they tried to put him. He slipped through crowds; He negotiated a path through obtuse questioning; He was not in the tomb. The tomb was empty because Christ is not contained by whatever humanity tries to do with him. Nailed to the Cross, they thought they'd got him, but no, the stone was rolled back and He was not there.

And where was He? In the garden of course, meaning the world we know because that's how the Bible uses garden imagery. The gospel begins with the birth at Bethlehem, the Incarnation, combining the Divine and the human, and on resurrection morning the message is the same. Christ is in the midst of the world; our world.

Easter faith, Easter joy, is not a foray into history, but a living experience which calls us to be an Easter people, people who accept that Jesus is out and about. Those who want a convenient Jesus, an affable Sunday morning Jesus find he's moved on. Christ says let's be the real church with the real me; let's work together.

I hope that you can find time in Lent to assess priorities and then that you feel able to look forward to Easter, striding forth in the strength of the risen Christ.

With every blessing, Rev Howard Robson

Nature Watch

The Snowdrop (*Galanthus nivalis*) is one of the welcome harbingers of spring, flowering as early as January, and more recently in December. Hopefully its appearance in a Manor Park garden is a sign that warmer, drier weather is on the way.

Another early spring or winter-flowering plant is the Hellebore (*Helleborus*). Despite the familiar names of Christmas or Lenten Rose, it is actually a member of the Ranunculaceae or buttercup family. Hellebores have leathery evergreen leaves and flowers with five petal-like sepals surrounding a ring of smaller petals modified to hold nectar. All parts of the plant are toxic and they are usually left alone by wildlife such as deer; it is wise to wear gloves when handling.

There are two clear camps when it comes to Hellebores: gardeners who cut back all the leaves to show off the flowers as they appear, and those who don't.



Hybridisation has produced a wide range of flower colours, including white, green, purple and pink. White-flowered varieties with darker patterns of red or pink and darker inner petals are much sought after, as seen above in that same Manor Park garden.

At the top of Littlecote Lane there is a large Mahonia, smothered in yellow flowers, a magnet for early-flying insects, including a comma butterfly (*Polygonia c-album*). Comma butterflies are easily identifiable with their ragged wing edges, orange colouring and brown spots. The species declined in the 20th century but is now experiencing a resurgence across England and Wales. Commas usually emerge from overwintering in March, but can be seen on any warm winter day.



They produce the next generation in June/July and, of this second generation, some will be of the form *hutchinsoni*, with paler underwings and brighter upper wings. The trigger for this

is the day-length as the larvae develop, so a good spring will lead to more of this form that then go on to produce a third generation of adults in late summer.

That same Mahonia has also seen a great deal of activity from bumblebees. These could be early bumblebees (*Bombus pratorum*), which, as the name implies, are the earliest of the UK bumblebees to get going. They are widespread across the UK in a range of habitats, living in colonies of a queen and workers. The normal life cycle is one year, where the queen emerges from hibernation in early spring, having been fertilised the previous summer. In some circumstances queens will not hibernate and start their colonies much earlier, meaning that two cycles can be achieved in the year.



There is also more recent evidence that some bumblebees, particularly buff-tailed (*Bombus terrestris*), are active all winter, enjoying nectar from winter-flowering plants, Mahonia being a favourite. The question then is – what colour is that 'tail'?

Another somewhat early starter was this newt that appeared on Hayley Bowsher Arthur's back doorstep in Dove Street.



This is a great crested or 'warty' newt (*Triturus cristatus*), the largest of the three UK species, measuring up to 15 cm in length; Hayley measured this one at just under 13 cm. Great crested newts are protected under the Wildlife and Countryside Act, are a UK Biodiversity Framework priority species and listed as a European Protected Species, often scuppering planning applications.

In addition to the size, the 'warts' (white spots) differentiate the great crested from other species. They also have bright orange undersides that are uniquely patterned with black spots. In the breeding season, males develop a wavy crest down their backs and females 'bulk' up.

The orange flash down its tail shows that this is a female, males have white flashes, and it was presumably on its way to a pond to find a mate. Like all newts, great crested newts leave their winter hiding places in tree roots etc., to return to the water to breed. This is when they are most at risk from predation by foxes, badgers, hedgehogs, birds – and domestic cats.



Farm Watch

by Richard Heady

We had one dry week at the beginning of February and, with most of the farm waiting for a crop to be planted, I took the opportunity to try and sow some wheat. This was most likely a mistake! I spent as long in the tractor seat planting the wheat as I spent crouched in the mud underneath the seed drill (planting machine) unblocking it.

The damp soil kept sticking between the discs that were meant to be cutting a slot for the seed, and clogged the machine up, but after a very frustrating and tiring day, I managed to plant one field. Since then we have had an enormous amount more rain, which is far from ideal, and every time I drive past this field

I see thousands of crows pecking their way through all the wheat seeds I planted.

Talking of birds, I took part in the Big Farmland Bird Count the other week, to help give a picture of UK bird populations on farms. I was relying on the Merlin app to help me identify the birds, but throughout the 30-minute survey time I had up to ten skylarks at any one time singing their lungs out and drowning out the sounds of all the other birds. It was a lovely sound track, but I had to send a video of some of the birds to a friend to help me identify them (as their own song was drowned out by the larks); we think they were meadow pipits.



There have been major farmer protests throughout Europe as the EU enforces their Green Deal that farmers feel will increase their costs and make them less competitive to cheaper imports. Rules were set to come into effect forcing them to halve pesticide use, which could have led to a halving of crop yields and many farmers going out of business. They also feel that tariff-free imports from the Ukraine are flooding their markets and depressing prices.

There is also trouble brewing in Wales as the Welsh government proposes a scheme to force farmers there to remove 20% of their land from production (10% into trees and 10% into habitat). This probably doesn't sound that bad to the Welsh MPs, but imagine how you would feel if the government demanded that you gave them 20% of your business, house or assets, but left you with the cost of maintaining them. So far I feel that the British government is doing just enough to stave off protests (although many farmers would disagree). The prices retailers are paying British farmers for milk and vegetables are disgraceful, but the government does seem to be listening to our issues, and is designing environmental schemes that look positive for nature, climate and for farmers. It will be interesting to see how things pan out over the next few weeks.

Stewkley's Clubs, Societies and Organisations

Organisation	Information	Contact Details
2nd Stewkley Brownies	Tuesday evening Pavilion	www.girlguiding.org.uk
Best Kept Village		
Book Club	Greg Bellamy	240487
Coffee Stop	First Thursday of month 10.30am in the Rec Pavilion	
Friends of St Michael's School	Kerry Turnbull	K3rry.turnbu11@gmail.com 07903 850386
Methodist Church	Rev Noreen Daley-Lee	noreendaley1@hotmail.com 240083
	Stewards	stewards@at-the-chapel.co.uk 240337
Pavilion Recreation Ground	See noticeboard on Pavilion wall	stewkleyrec.org 07762 886 329
Royal British Legion Stewkley Branch	Air Vice Marshal Steve Nicoll	nichollgold@gmail.com 07736 811479
Scouts	Gail Oliver	olivergail67@gmail.com
St Michael's Church	Donald Peebles, Church Warden	d.peebles@ucl.ac.uk 07966 035623
	Rev Howard Robson	01296 688593
	Rev Andrew Krauss	07508 213154
Stewkley Bellringers	Practice Wednesdays 7.30 to 9pm	ailsaknightley@btinternet.com 240967
Stewkley Film Archive	john@stewkleyfilms.org	web:Stewkleyfilms.org
Stewkley Football Club		www.stewkleyfc.co.uk
St Michael's School	Mr David Morley, Head Teacher	240248
	Mrs Fiona Phimester. School Secretary	office@st-michaels-bucks.sch.uk
Stewkley Local History Group	Jill Scott	jill@stewkleyhistory.org.uk
Stewkley Parish Council	Joanna Simonds Clerk	stewkleyparishclerk@gmail.com 07399 673145
		https://stewkley.org.uk/
Stewkley Players	Erica McDonald	ericamcdon@gmail.com info@stewkleyplayers.co.uk
Stewkley Short Mat Bowls Club	Thursday evening from 7pm	Julia Corkett 240379
		Sandy Flewin 240076
Stewkley Singers	Ron Sims	ronsims@live.co.uk
Stewkley Tennis Club		www.StewkleyTennisClub.com
Stewkley Vicarage Cricket Club	Alan Hardings	alanhardings1970@gmail.com 242227
		07548 979636
Stewkley Walkers		stewkleywalkers@gmail.com
Women's Institute	Sheila Fellowes	sheila@thefellowes.co.uk 240596

Details correct at 26 February 2024. If you are aware anything is incorrect or has changed please email team@stewkleygrapevine.co.uk

ADVERTISING IN STEWKLEY GRAPEVINEwww.stewkleygrapevine.co.uk**Publication date:** 1st of each month except January.**Deadline for advertisements:** 15th of month prior to publication.**Advertising Copy:** By email to team@stewkleygrapevine.co.uk**Display Ad Format:****Electronic advertisements should be supplied as .pdf**, but we can also accept .doc or hi resolution .jpg files. For best quality, images should be 300dpi. *All advertisements are printed in greyscale. Please check your ad is readable in monochrome. Pre-paid ads may be changed at no extra cost.***Classified Ad Guidelines:**

Generally one line header, plus up to 12 words of text, plus contact details. One line header plus 13- 24 words of text, plus contact details for twice the price.

Advertising Rates:

	Stewkley	Non-Stewkley
For Sale (Max of 2 items)	£5	£10
Classified	£5	£10
Classified highlighted	£10	£20
Forthcoming events	Free*	Not available

(*Limited to Classified Allowance).

Display, Eighth Page £15 £25 (w:94 x h:65mm landscape)

Display, Quarter Page £25 £35 (w:94 x h:135mm portrait)

Display, Half Page £35 £55 (w:194 x h:135mm landscape)

Payment Terms: Payment in advance of first publication

3-5 issues 5% discount

6-10 issues 10% discount

11 issues (annual) 15% discount

Monthly Standing Order on 12th of month. 10% Discount.

Minimum period - 6 months. Cost of 11 Issues is spread over 12 months.

Advertising payment and copy contact:01525 242137 or email: team@stewkleygrapevine.co.uk**HOME MAINTENANCE****T.G.R ELECTRICAL**

Stewkley based, NICEIC Approved Electrician. Sockets, lights etc. Free quotes. Call: 07840 100501

STEWKLEY DECORATINGQuality work, Guaranteed, Fully Insured, Reliable & Trustworthy
[Instagram.com/stewkleydecs](https://www.instagram.com/stewkleydecs) or stewdecor@gmail.com
Call Stewart on 07981 226922**JTS DECORATING SERVICE & PROPERTY MAINTENANCE**Call John on 240372, mobile: 07809 113090,
Email: jts.dec24@gmail.com**SERVICES****COUNTRY FRAME**

The complete picture framing service. From prints and posters to paintings and needlework. Tel: 240163 / 07771 508805 : Paul Body. Please call first.

HORSE RIDING LESSONS IN STEWKLEYFrom complete beginners to experienced riders. Adults and children. Fully licensed/ insured. Licence No. LC201711-4339.
Call Sarah Gammon, Kilnholm Stables. 240529 or 07712 854034.**STORAGE****MOUNT PLEASANT FARM STORAGE**

20 foot shipping containers available for general storage

Short or long term lets at competitive rates

Mount Pleasant Farm, Dunton Road, Stewkley

Tel: 07866 609047 or Email: fionampwebb@icloud.com**STEWKLEY STORAGE LTD**For all your storage needs. Domestic & Commercial
Rooms & Containers. Larkhill Farm, Stewkley Rd, Soulbury
www.stewkleystorage.co.uk Tel: 01525 240297**SECURE STORAGE IN STEWKLEY**

Dry storage to let in central village location.

Short and long term availability.

CCTV coverage, secured premises.

Tel 07860 205195

AG

Automotive Engineers

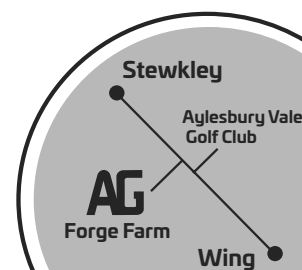


Forge Farm, Wing Road, Stewkley

Andrew GurnettFor a reliable service and all your
motoring needs, give me a call**Servicing****Tyres****MOT's****Repairs****Exhausts
& more**

Tel: 01525 240991

Mobile: 07980 600095

**Installation.
Servicing.
Repairs.**

Plumbing & Heating Services

☎ **07725 480047**

Please get in touch for a free estimate

**Chappell
Plumbing
& Heating.**




Carolyn Smith MCFHP MAFHP
Foot Health Practitioner
Fully insured
Enhanced DBS cleared

**Providing quality care for
common foot conditions
including corns and callus,
verrucae, fungal infections and
ingrown toenails.**

Phone/whatsapp: 07738231912
Email: carolyn@cublingtonfootcare.com
Visit: www.cublingtonfootcare.com





Why choose Paws in motion?

- Experienced and loving dog walker
- Tailored walks to suit your dogs needs
- Flexible scheduling to suit your needs
- Affordable rates

Services

- Group walks for sociable dogs
- Private walks for one-on-one attention
- Comfort drop ins
- Saturday walks available

Get in contact with me today to schedule your dogs next adventure!


Tel. 07913205287


Paws in Motion
Paws.inmotion24

Email. 24pawsinmotion@gmail.com

Paws in Motion - Where every step is a Paw-sitive adventure!

f i

**wild
ROSE**
FLOWER COMPANY

07876 394 086
wildroseflowercompany.co.uk
@wildroseflowercompany

**Wildly beautiful, naturally
scented British flowers,
direct from the farm**

Bouquets • Subscription Flowers • PYO
Weddings • Funerals • Events

The Granary Giftshop & Farmgate
We are open on Fridays
9.30am – 4.30pm

Town Farm, Hoggaston,
Buckingham. MK18 3LQ



Need a venue for your function?

To Hire Facilities at **the Pavilion**
call 07762 886 329

To Hire the **Village Hall**
call 07582 580229

To Hire the **Chapel Schoolroom**
call 240337

Our Pork Beef & Lamb

At Wing
Market
Thursdays
9am-12



Farm Shop
open
Fri 12-6pm
Sat 9-1pm

MorrisofHoggaston.co.uk
01296 714239 MK18 3LH

CARPENTERS ARMS

Stewkley

Tel: 01525 240029

General Knowledge Quiz

Wednesday 7th March @ 8pm

Please book a table for this busy event.

Mothering Sunday

Free glass of Prosecco for all Mum's

Between 4pm and 8pm

Charity Bingo is back!

Wednesday 20th March

£10 per person

All proceeds to Macmillan.

1 Wing Road, High Street South, Stewkley

Computer Support for Home & Business Users

Problem Solving:
Virus, spyware detection & removal
Internet & email assistance
Fault diagnostics, repairs & upgrades
Slow running PCs

Services:
Computer support for PCs, Mac & Linux
Wireless & wired networking
Data recovery
Install & setup
Health checks

Sales:
Desktops, laptops, printers, peripherals & software

For friendly advice call John on
07968 536068 or 01525 261381
email: john@computamotion.co.uk - www.computamotion.co.uk

Computamotion Services Ltd - 9a Lower Way, Great Brickhill, Bucks, MK17 9AG
Established 1999 with over 25 years experience

comput@mation
computer support & services

BLOCKED DRAIN?

COUNTY DRAINAGE & PLUMBING SOLUTIONS

YOUR LOCAL DRAINAGE EXPERT

WITH OVER 30 YEARS EXPERIENCE

07944 297538 or 07951 502274



High Pressure Water Jetting - CCTV Survey's

Specialist in Drain Repair - Replacement and Relining

All work fully Guaranteed

Email: steve@countydrainage.me.uk

www.countydrainage.co.uk

GRAPEVINE ADVERTISING

We appreciate all of our advertisers whose continued support ensures delivery of a free copy of Grapevine to every home and business in Stewkley.

Acceptance and publication of an advertisement does not imply endorsement or approval by Grapevine of the company, product, or services offered.

DEADLINE DAY
for articles and adverts 15th of month

A.B.EATON

- BATHROOM DESIGN & INSTALLATION
- PLUMBING HEATING
- UNDERFLOOR HEATING
- TILING & REFURBISHMENT
- APPRENTICESHIP SERVED
- OVER 35 YEARS EXPERIENCE

CALL FOR A FREE QUOTE
07801 938632

TREATMENTS AVAILABLE

- Laser hair removal
- Hair thickening
- Anti-aging/wrinkle
- Acne treatments
- Pigmentation
- Rosacea
- Skin tightening
- Fat dissolving
- Stretch marks
- Skin tags
- B12 injections
- Blood/health tests

Gift vouchers available

£25 £50 £100
£250 £500

BOOK NOW

Book your consultation online at
www.thelasercentre.co.uk

📞 07921904638
✉ lena.mansfield@me.com
📍 Old Manor Court, Stewkley

THE LASER CENTRE

Established 2015



Lena Mansfield
Laser & Skin Specialist

Local Private GP Specialists

Dodley Hill Barns, Station Rd. Swanbourne. MK17 0SR

www.seemegp.doctor

01296 252000

Face to face consultations

Well person health checks

Retirement health checks

Specialist women's health and menopause consultations

ECGs

Blood tests

Firearms, taxi & HGV medicals

Travel vaccinations

**P & M**Garden & Property
Maintenance

- Stewkley based with over 20 years experience.
- All types of estate and grounds maintenance and management.
- Property maintenance and refurbishments covering multiple trades.
- Garden maintenance and landscaping.
- Fencing.
- Green waste removal services (Upper Tier Waste Carrier Licence held).

**Call Simon for a free,
no obligation quote!**

Tel: 07985 687 070**Email: pandmmaintenance@yahoo.com**

Can we chat about

money?

We recognise that talking about money and finances can be tricky. It's a personal topic. So it's reassuring to know there's someone on hand who can help you address your needs, understand your goals and realise your dreams.

Our friendly and approachable service is backed by the strength and security of a FTSE 100 company, St. James's Place Wealth Management. What's more, being local means we're here to help whenever you need us.

We can help you with investment, retirement, tax and estate planning. Importantly, we see this as a long-term relationship, supporting you and guiding you through life's financial challenges as your trusted adviser and confidante.

Let's start a conversation

Tony Sareen

(ASCI, CeMap)

Managing Director

01525 643888

0777 8888 102

tony.sareen@sjpp.co.uk

www.tdsfinancial.co.uk

Partner Practice

**St
James's
Place**

TDS Financial Ltd is an Appointed Representative of and represents only St. James's Place Wealth Management plc (which is authorised and regulated by the Financial Conduct Authority) for the purpose of advising solely on the group's wealth management products and services, more details of which are set out on the group's website www.sjpp.co.uk/products. The 'St. James's Place Partnership' and the titles 'Partner' and 'Partner Practice' are marketing terms used to describe St. James's Place representatives.

*Your friendly
local printer...*



*34 years
in print*

HARLEQUIN PRESS Ltd

Lithographic and Digital Printing

Booklets	Leaflets
Brochures	Letterheads
Business Cards	Magazines
Compliment Slips	Newsletters
Delivery Notes	Note pads
Directories	Order of Service
Draw Tickets	Personal Stationery
Event Tickets	Postcards
Invitations	Programmes
Invoice Books/Sets	Timetables

and Grapevine

Friendly Service, Free Advice

Tel: 01908 506722

12 Bacon House Farm • Little Horwood • Milton Keynes • MK17 0PS

office@harlequin-press.co.uk • www.harlequin-press.co.uk

CAU ELECTRICAL



Indoor and outdoor lighting

New fuse board

Additional sockets

New power supply

Full rewires

Fire alarms

Smoke detectors

Periodic testing

CCTV

All work guaranteed.

PART P approved

No job too small

Call: Craig 07968 152 709

Email: cajelectrical@hotmail.co.uk

PHOENIX CARPETS

Your local carpet & flooring showroom

SHOWROOM OPENING TIMES:

Mon-Thu: 10am to 4.00pm

Fri: closed. Sat 10am to 1pm

17 Bacon House Farm, Little Horwood MK17 0PS

We have been supplying and fitting carpets for 30 years and have a wide range of carpets, vinyl and lvt luxury vinyl tiles and accessories at our Little Horwood showroom.

Free measuring and estimating. Rug binding service also available.

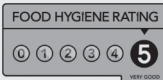
T: 01908 501019

E: denis@phoenixcarpets.co.uk



Freshly cooked authentic Thai food delivered to your door
Simply place your order on the day or pre-order up to 5
days in advance @

www.amphathai.co.uk



Open Thursday-Saturday
5.30pm-9.30pm



Search AmphaThaiUK on Facebook to see
our five star reviews

D.B'S GAS PLUMBING AND HEATING SERVICES

Local village company with
over 25 years experience.

Boiler breakdowns, repairs & servicing.
Full heating installations and extensions.

Gas safety checks and certification
NO JOB TOO SMALL

All workmanship fully insured

O.A.P. 10% DISCOUNT ON HOURLY RATES
NO CALL OUT CHARGE. COMPETITIVE RATES.

Tel office: 240784

Tel Daron: 07799 122971

AYLESBURY VALE CHIROPRACTIC **LISCOMBE PARK, SOULBURY** Unit 9 Media Village Liscombe Park LU7 0JL



**CHIROPRACTIC TREATMENT
FOR ALL AGES**

NEUROLOGICAL PHYSIOTHERAPY



MASSAGE THERAPY

CLINICAL PSYCHOLOGY



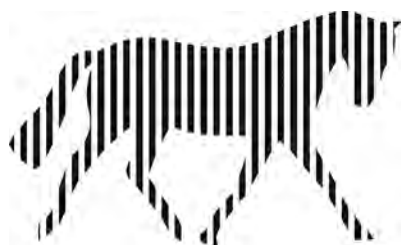
**MOST MAJOR HEALTH
INSURANCE ACCEPTED**

01296 846981



Book appointments online

WWW.AVCCLINIC.CO.UK




RB EQUESTRIAN

AWARD WINNING STORE - SINCE 1989
FOR THE HORSE & RIDER
FOR THE DOG & OWNER
FOR COUNTRY FOOTWEAR & CLOTHING



UNIT 7 LOWER RECTORY FARM, GT BRICKHILL, MK17 9FX | 01908 365335 | WWW.RBEQUESTRIAN.CO.UK

IN STORE | ONLINE | CLICK & COLLECT | TELEPHONE



The Retreat Cublington

Immersive Reiki & Sound Therapy Experiences

Reiki Healing Therapy
Crystal Bowl Sound Therapy
Himalayan Bowl Sound Therapy
Himalayan Bowl Massage Sound Therapy
Group Sound Bath Therapy
Counselling Support Session

Please get in touch, you are important.

Email: fi@theretreatcublington.co.uk
Web: www.theretreatcublington.co.uk
Call: Fiona 07950109679



- Physiotherapy appointments
- Mat-work Pilates
- Reformer Studio
(very limited places in classes)
- Hydrotherapy Pool




Whatever your fitness level, ability or disability
our aim is to help you be the fittest, healthiest version
of yourself so you can live life to the fullest!

If you are interested in any of our services and would like to
discuss how we can help you please contact:

info@cottesloeophysio.co.uk
07811 238163
www.cottesloeophysio.co.uk
Cottesloe Physio Cublington Rd Wing LU7 0LB



BLOOMFIELD

HOME IMPROVEMENTS

**Conservatory and
Garage Conversions**

07710 255875



**Windows • Doors
Porches • Bifolds**

Your local Installer: Darren Bloomfield. Email: bloomfield.homeimprovements@gmail.com

Smash your goals and get results at Hunt Fitness

We offer tailored one-to-one, small group and online personal training with our dedicated coaches, who will support you at every stage of your fitness journey.



Get in touch to discuss how we can help you smash your fitness goals.

www.huntfitness.co.uk

Facebook: [huntfitnessuk](https://www.facebook.com/huntfitnessuk) Instagram: [@huntfitness.uk](https://www.instagram.com/huntfitness.uk)
Cublington Rd, Leighton Buzzard LU7 0LB



hunt fitness

ANNETTE GESOFF

**Clinical Massage Therapist
BASED IN STEWKLEY**

Visit my website for further information:
www.gesoffmassage.co.uk

Please phone: **01525 240135** or **07709 629283**

Or email: enquiry@gesoffmassage.co.uk



Beechmoor Farm, Cublington Road, Whitchurch
**Home Produced Meat : Pies, Cheeses & Olives : Fruit & Veg
Milk, Bread & Eggs : Pickles & Preserves : Frozen Produce**

Open Tues, Wed, Thurs & Fri 8am -5pm
Saturday 7.30am - 1pm (closed Sunday & Monday).
Tel: 01296 641207 : Email: parrottbros@parrott-bros.co.uk
Web: www.parrott-bros.co.uk

**P PURSELL
R RANDALL**
MECHANICAL SERVICES LTD

PLUMBING & HEATING ENGINEERS

OUR SERVICES INCLUDE:

- General Plumbing
- Boiler Servicing / Breakdowns / Aga & Rayburn Servicing
- Full Boiler Installs & System Upgrades

We work on Oil, LPG & Natural Gas - We are members of Gas Safe & OFTEC

CONTACT JUSTIN

Mobile **07770 918101**

Office **01525 220262**

Email justin@prmechanical.co.uk

WWW.PRMECHANICAL.CO.UK

All major credit
cards accepted



Explore... Dream... Discover...



Travel Impressions are specialists in tailor-making holidays to destinations worldwide. If you are thinking of travelling to Canada, USA, Australia, New Zealand, Southern Africa, South America, Asia, India, Sri Lanka, China, Japan or within Europe, please call or email us.

We can help you create the best itinerary, as we offer:

- Personalised planning - we take the time to get to know you
- Friendly, honest advice from an independent travel agency
- Extensive experience to arrange every detail
- Using fully bonded tour operators • No booking fees

Travel Impressions



01442 890265

enquiries@travelimpressions.co.uk
www.travelimpressions.co.uk

Suite 4, George House, 64 High Street, Tring, Herts. HP23 4AF



J & J LUXFORD LTD

Stewkley based builders

For all your building needs project managed from design to completion

For testimonials and information visit

www.luxfordbuilders.co.uk

Contacts:

Julian Luxford 07885 455203

James Luxford 07860 726741



HUNTER'S GARAGE
Established 1984 Stewkley Tel: 01525 240696



Local family run automotive garage offering:

- Servicing
- Repairs
- MOT's on site
- Diagnostic & tuning
- Tyres
- Exhaust's
- Batteries

We also offer the service to collect and deliver vehicles from Leighton Buzzard and surrounding villages.

Courtesy car available by prior arrangement.



Unit 3-4,
Manor Business Centre
High street South
Stewkley
01525 240696



@huntersgaragestewkley

CHARLES HILL

GARDEN SERVICES LTD
DESIGN | BUILD | MAINTAIN

LANDSCAPE CONTRACTORS

NCH Horticulture. City & Guilds Garden Design
A professional company working with all your garden requirements
from design to complete landscape.

07773 723236

www.charleshillgardenservices.co.uk

www.alleyearroundbbq.co.uk

SUPERIOR INTERIORS DECORATING SERVICES

Provide a highly professional and comprehensive
decorating service with over 30 years experience

PLEASE VISIT MY WEBSITE FOR MORE INFORMATION
www.superiordecor.co.uk

Contact Jim Munro

Mob: 07788 921865 Tel: 01525 240741

Email: jim.m.munro@gmail.com

THE LITTLE IT COMPANY

* MAKING YOUR COMPUTERS SMILE *

Laptops, PCs, Tablets, Apple Macs, Wifi Internet,
Repairs & Upgrades & all Home Technology

FREE collection & delivery

NO FIX - NO FEE GUARANTEE

Facebook Page:
@thelittleitc

Website:
www.thelittleITcompany.co.uk

Call Mark: 07789 304 274 or Email: service@thelittleitcompany.co.uk

BASED IN CHEDDINGTON *

City &
Guilds
Qualified

NVQ



DAMIAN STEWART PLUMBING & HEATING

PROFESSIONAL QUALIFIED PLUMBING & HEATING ENGINEER

- For all your Plumbing, Gas, Oil & Heating requirements
- Boiler & appliance installations, system upgrades, servicing, fault finding & repair
- Oilboiler and tank installations, service & repair
- Complete bathroom installations & design
- No job too small / Fee no obligation quote / No call out charge

Tel: 01296 688968 / 07527 900028

E mail: info@damianstewartplumbing.co.uk www.damianstewartplumbing.co.uk
7 Chiltern Road, Wingrave, Aylesbury, Bucks, HP22 2QQ



J&P SITE SERVICES CLEAR AND BUILD

Transforming
Spaces,
Enhancing
Environments

Comprehensive Construction
& Landscaping Solutions

Serving Beds, Bucks,
Oxon & Herts Regions

Years of Experience, Portfolio of Successes

Contact Jaime on:

07989445761 info@jpsiteservices.co.uk

Expertise Includes:

- Site Clearance
& Groundwork
- Ditching, Fencing &
Concrete Laying
- Garden Rooms
& Landscaping
- Field Topping & Mowing
- General Maintenance
- Driveways & Small
Building Works

follow us on @J&PSiteServices

Let's bring your vision to life!

What Bin is it this week?

Bins should be out for 6.30am.









Food Waste

General Waste

Recycling

Garden Waste

March 2024

Wednesday	6	YES	YES		YES
Wednesday	13	YES		YES	
Wednesday	20	YES	YES		YES
Wednesday	27	YES		YES	

Please do not block footpaths with bins.

NB: Bletchley Road, Dean Road and Mursley Road are all collected the day before.

BUS TIMETABLE

The times shown below are from the bus companies' website. There appear to be some inaccuracies. Grapevine is not responsible for any incorrect information, or any issues caused by errors.

Red Rose No 162						Red Rose No 154	
Stewkley - Leighton Buzzard - Bletchley			Bletchley - Leighton Buzzard - Stewkley			Stewkley - Aylesbury	
	Tue	M/W/Thu		Tue	Mon/Wed/Thu		Friday
Carpenters' Arms	10:10	09:35	Bus Station, Bletchley		- 12:25 - 14:25	Soulbury Road	09:39
Dove Street	10:11	09:36	Bletchley Tesco		- 12:27 - 14:27	Library (North of the red phone box)	09:40
Soulbury Road	10:17	09:42	Wharfside		- 12:28 - 14:28	Village Hall	09:41
Hollington Turn	10:21	09:46	Galleylane Farm		- 12:33 - 14:33	Stockhall Crescent	09:42
Stewkley Road	10:23	09:48	Mill Lane		- 12:35 - 14:35	Haywood Park	09:43
The Boot PH	10:24	09:48	Rotten Row		- 12:37 - 14:37	Haywood Park	09:43
Haywood Park	10:25	09:49	The Old Red Lion		- 12:38 - 14:38	Stockhall Crescent	09:45
Stockhall Crescent	10:26	09:50	Picnic Area		- 12:41 - 14:41	Village Hall	09:46
Village Hall	10:28	09:52	Manor Farm		- 12:42 - 14:42	Library (North of the red phone box)	09:46
Library (North of the red phone box)	10:30	09:54	High Street		11:40 - 13:45 -	Dove Street	09:47
Stoke Road	10:35	09:56	Tesco, Leighton Buzzard	13:00	11:40 - 13:45 -	The Carpenters' Arms PH	09:49
Bridge Street	10:36	09:57	Stoke Road	13:01	11:41 - 13:46 -	Friarage Road	10:18
West Street	10:38	-	Old Road	13:01	11:41 - 13:46 -	Aylesbury Bus Stn (Bay 6)	10:20
High Street	-	09:58	Bideford Green	13:03	11:43 - 13:48 -	Returning	
Tesco	-	09:58	The Boot PH	13:09	11:49 - 13:54 -	Aylesbury Bus Stn (Bay 6)	12:15
Manor Farm	-	10:04	Stewkley Road	13:10	11:50 - 13:55 -	Exchange Street	12:16
Picnic Area	-	10:06	Hollington Turn	13:11	11:51 - 13:56 -	High Street	12:16
The Old Red Lion	-	10:11	Soulbury Road	13:10	11:55 - 14:00 -	Aylesbury New Street	12:17
Rotten Row	-	10:11	Dove Street	13:16	11:56 - 14:01 -	Carpenters' Arms	12:46
Mill Lane	-	10:14	Carpenters' Arms PH	13:17	11:57 - 14:02 -	Dove Street	12:47
Galleylane Farm	-	10:16	Dove Street	13:18	11:58 - 14:03 -	Library (North of the red phone box)	12:47
Wharfside	-	10:20	Library (North of red phone box)	13:18	11:58 - 14:03 -	Village Hall	12:48
Bletchley Tesco	-	10:23	Village Hall	13:19	11:59 - 14:04 -	Stockhall Crescent	12:49
Bus Station, Bletchley	-	10:25	Stockhall Crescent	13:20	12:00 - 14:05 -	Haywood Park	12:50
			Haywood Park	13:22	12:02 - 14:07 -	Haywood Park	12:50
						Stockhall Crescent	12:51
						Village Hall	12:52
						Library (North of the red phone box)	12:53
						Soulbury Road	12:53